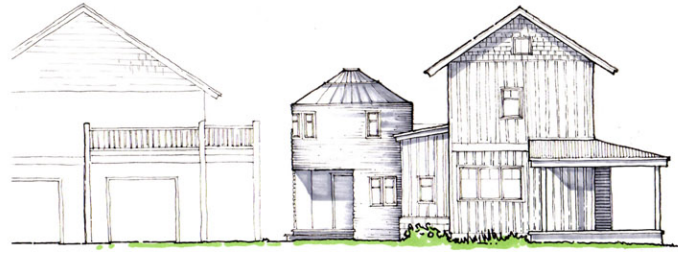
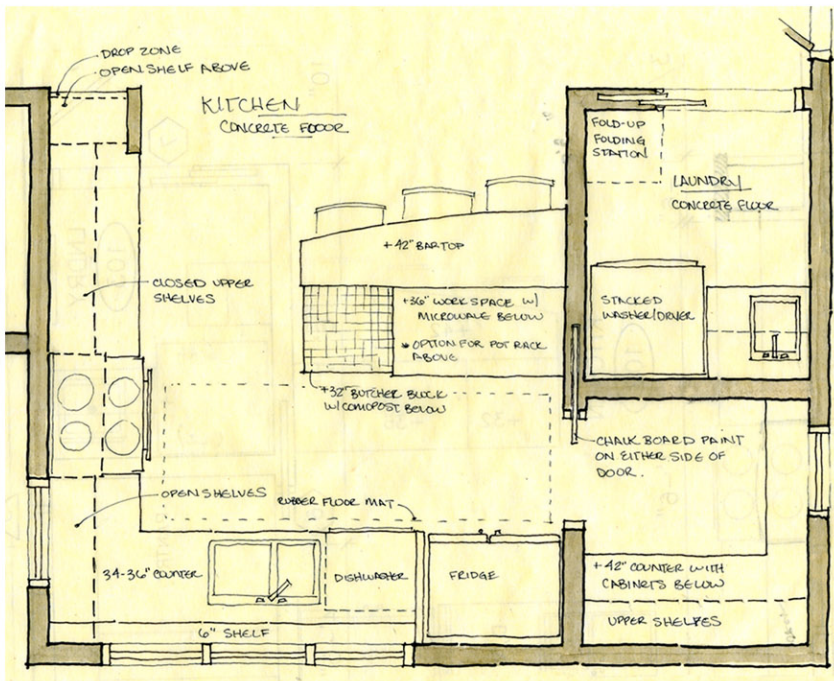
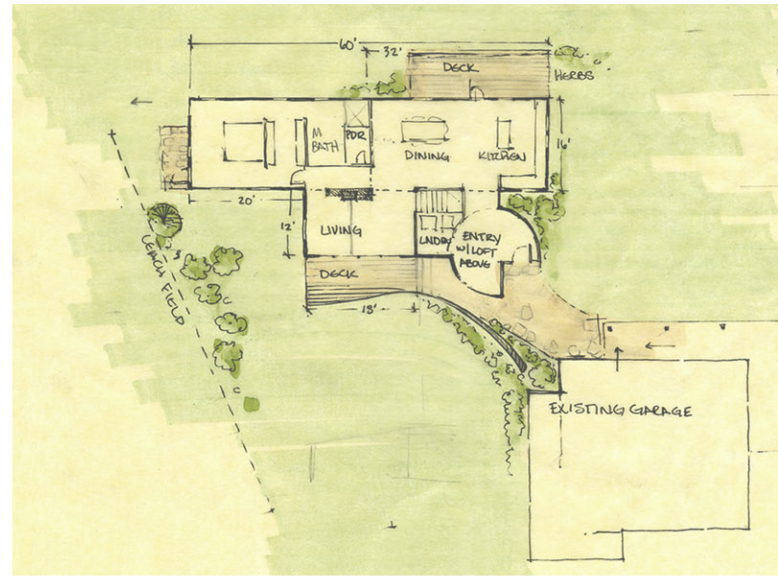
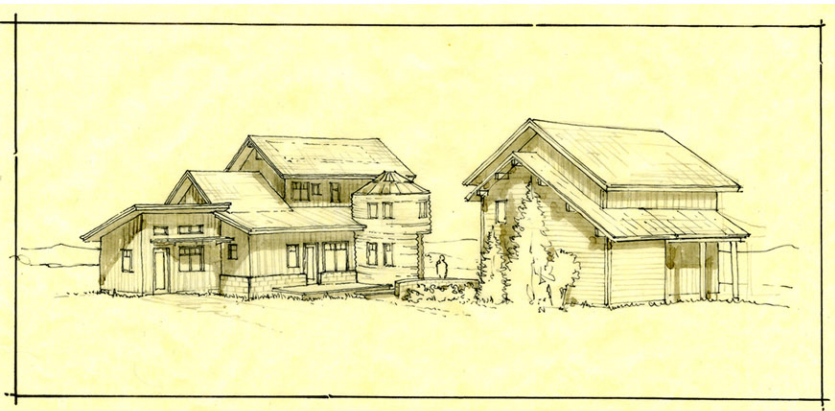


# cottonwood shadows residence



This home was designed to integrate with an existing 2 car garage that has living space above. It incorporates a reused grain silo as the entry (with study above) and utilizes passive solar design. The plan is elongated east/west to capitalize on the southern sun. As it was important to relate the mass of the new building to the existing tall garage, we designed a 2-story home with lower single story elements to bring down the overall scale and relate better to the site.



design in process

