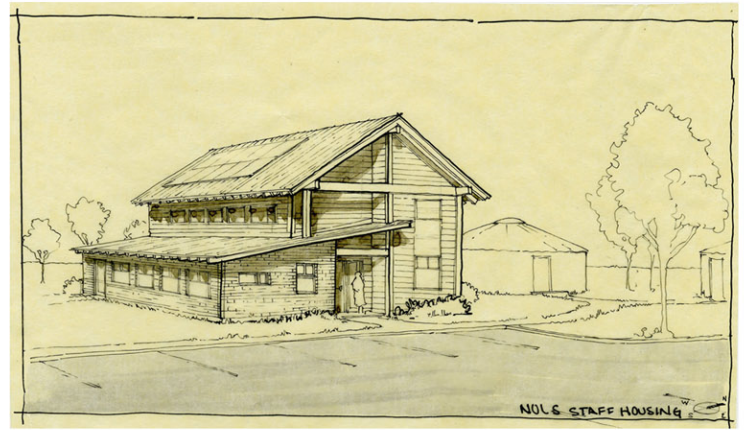


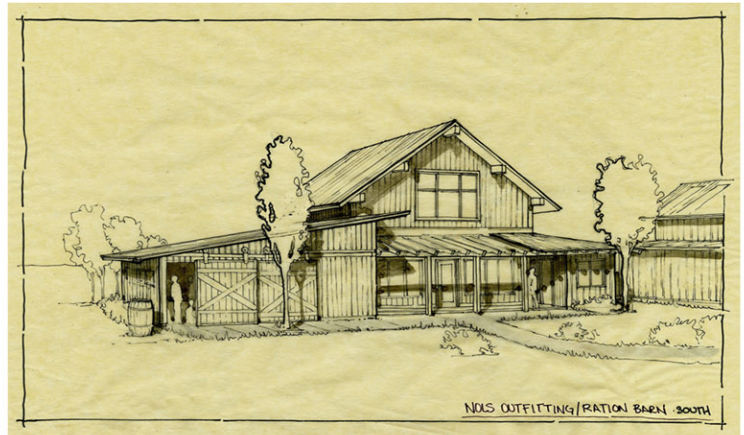
national outdoor leadership school • teton valley branch

This master plan is a collaboration between Natural Dwellings Architecture, Harmony Design & Engineering, and Hanson Illustration. We worked closely with the Teton Valley NOLS branch to create a vision for growth and expansion on the existing campus near Darby Canyon in Teton Valley, Idaho.

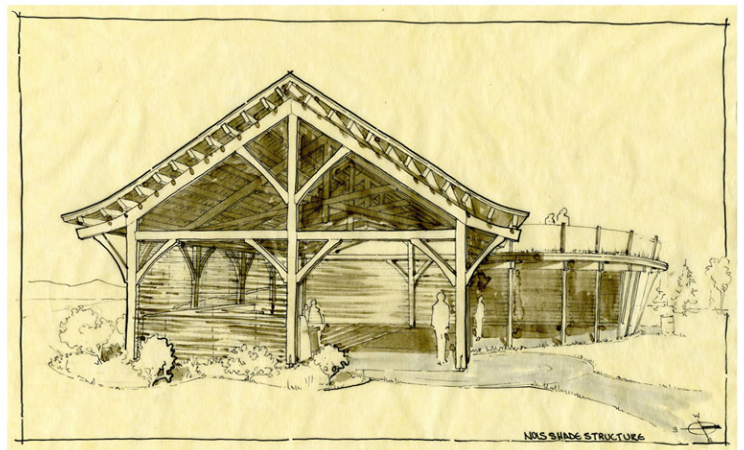
Proposed facilities incorporate recycled and locally harvested construction materials, passive solar design, alternative energy use, low water xeriscape landscaping and other green technologies.



faculty housing



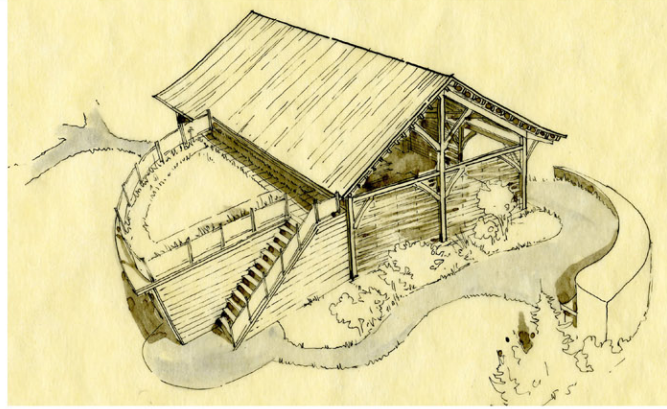
rations barn



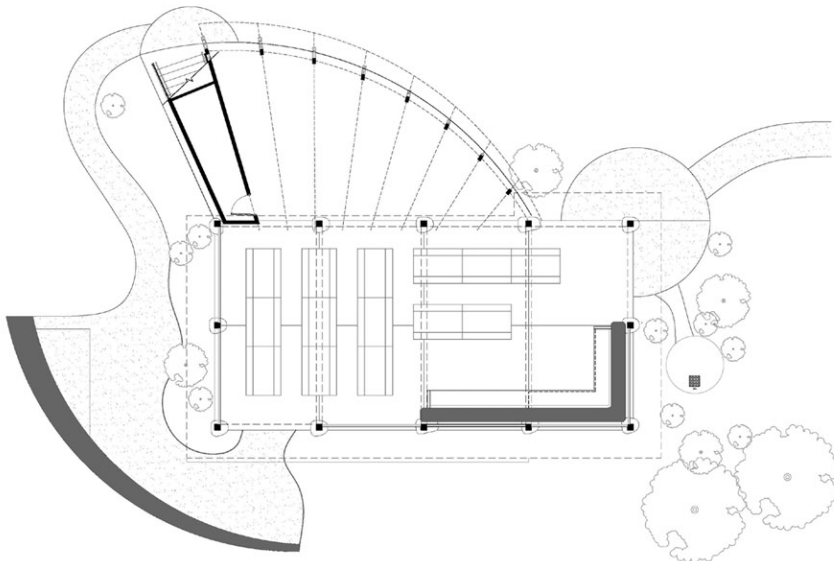
shade structure



nols pavilion • teton valley branch



The pavilion is a timberframe structure designed to house outdoor functions on the NOLS campus. The large covered area will be used for backbacking trip preparations, outdoor dining, and meetings. It will have an outdoor kitchen and strawbale and willow 'wind' walls to be added in 2012. The upper deck is a living roof designed for futher meeting space and a place for students to view the Teton valley and moutains that surround the campus.



Built by
Teton Timberframe

