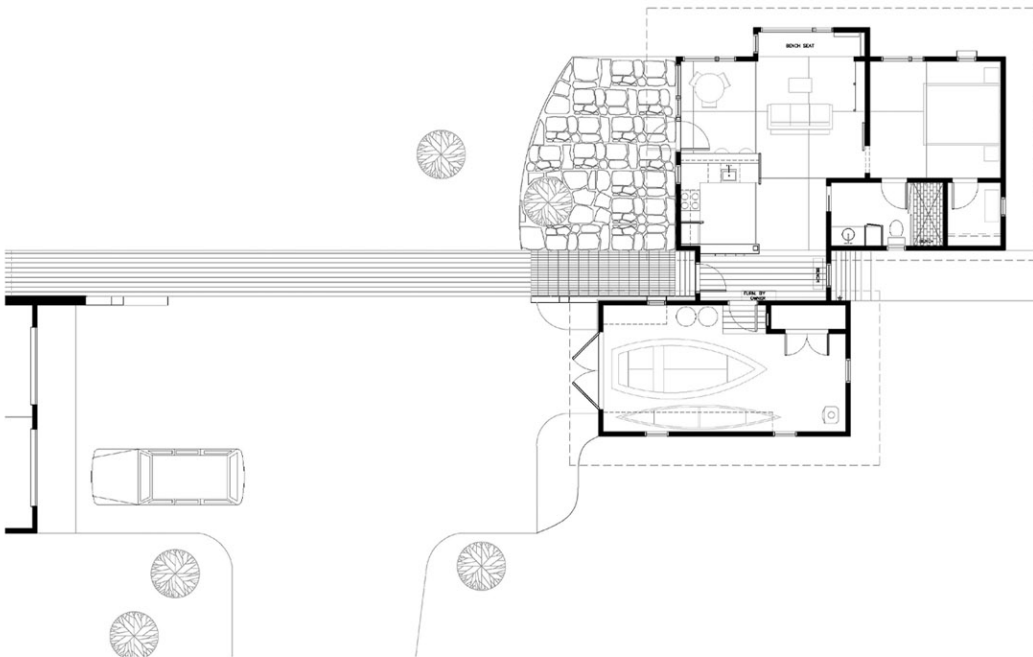


pinedale guest house



The original house was designed with Carney Logan Burke Architects (see projects with Carney Logan Burke Architects). This new guest house and garage was designed as an extension of the strong linear site axis. The structure features advanced framing, closed cell foam insulation, energy efficient appliances, and a 6 kW solar system that powers the guest house and part of the main house.



guesthouse 780 sf
garage 360 sf
total 1140 sf

Built by
Roscoe Company



pinedale guest house

